

Cut-out error

On a few panes, a "regular L" cut-out appears, which occurred when the sheet was punched gum side up in error. The cut-out appears only in the upper right margin of an upper pane (*far right*), or less often in the lower right margin of a lower pane (*near right*).

Note that the pane on the far right also shows gutter perforations with an attached tab in the far right margin. This results from poor trimming, since the vertical row of perforations should have been trimmed off.



regular L
cut-out





FIRST U.N.
ISSUE 1951



FIRST U.N.
ISSUE 1951



FIRST U.N.
ISSUE 1951



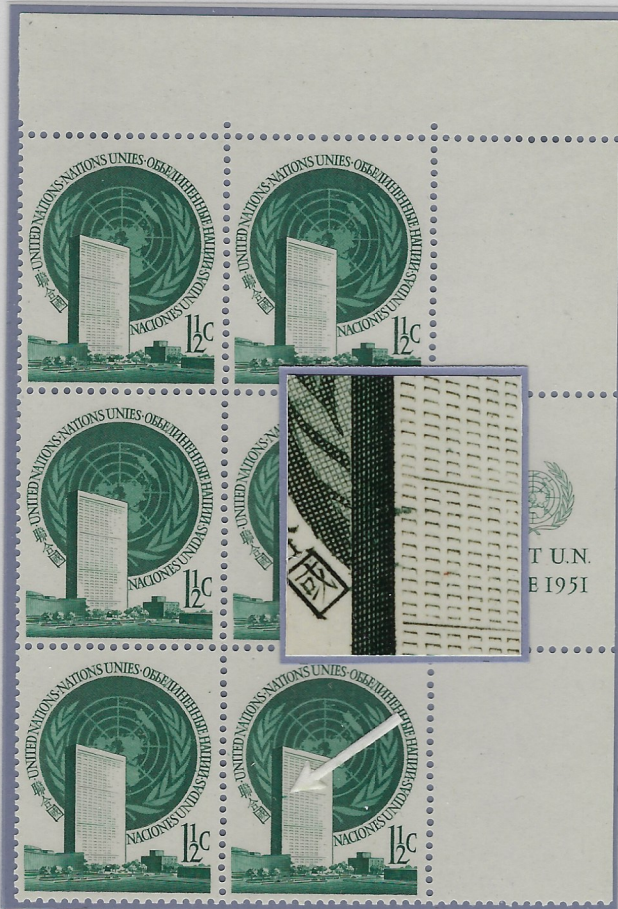
FIRST U.N.
ISSUE 1951

C10

057

L

Printing Varieties



Occasionally the printing plate was overinked which caused an ink streak, seen here in the main building.



Sometimes the plate was underinked, resulting in an impression which is lighter than usual.



An ink smear resulted when the slip sheet inserted between printed sheets moved on the wet sheet.



Some stamps, due to uneven inking, show lighter leaves on the left side of the wreath of the U.N. emblem.

Perforation Error



On some occasions, poor alignment of the sheet in the perforation machine caused the perforations to run through the printed stamps — a rare occurrence for Enschedé, due to close inspection of panes prior to issue. Note the gutter perforations in the upper left margin.

Control Numbers

Occasionally, the control numbers were poorly printed, probably because the printing device became worn or chipped. Some of these were corrected by the printer, using green ink.



Normal control number

Second printing: Issued April, 1958; 1,000,000 issued. The paper is of medium fluorescence (Group IV). The cut-out — a spade — can be found only in the upper left margin of upper panes or in the lower right margins of lower panes; 20,000 cut-out blocks exist. All margins are perforated. There are no control numbers.

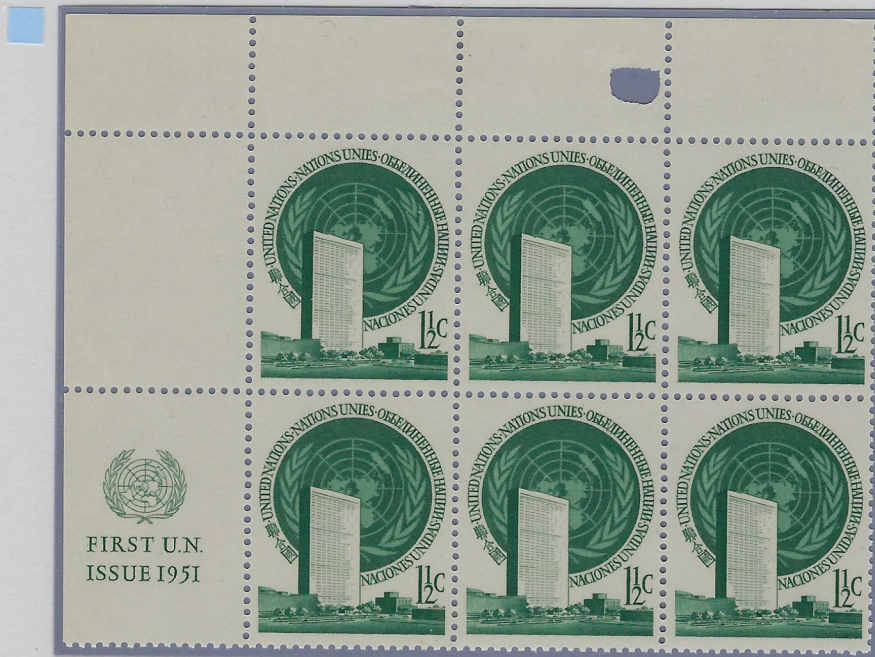
Note the gutter perforations in the right margin.



spade cut-out



Cut-out error



Occasionally, a sheet was punched twice in error, resulting in overlapping double cut-outs.



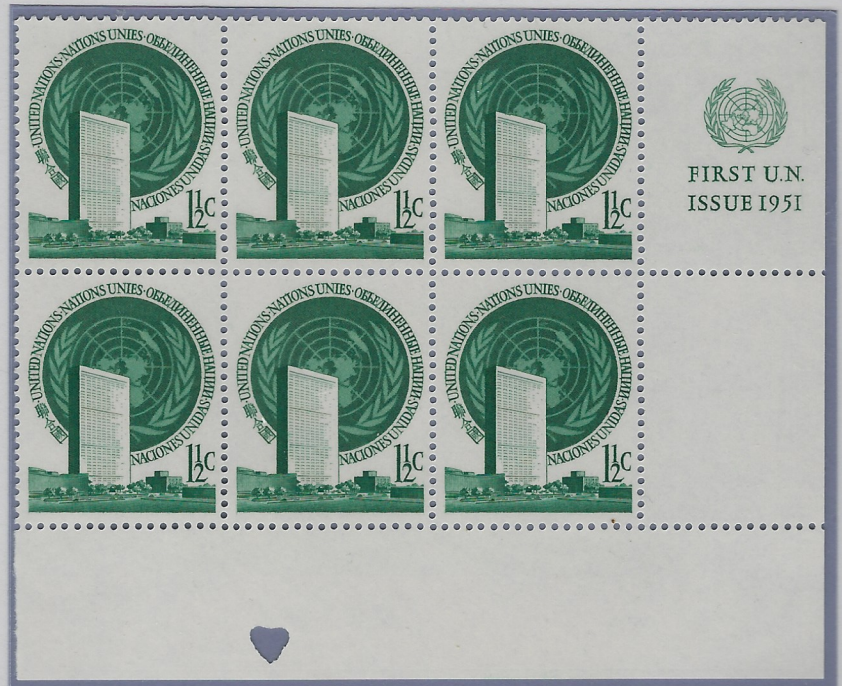
Third printing: Issued April, 1961; 1,000,000 issued. In the third printing, most of the panes were trimmed to approximately 7¾" in height instead of the full 8", and the cutout — a heart — was trimmed off (*left*), with only an occasional pane showing a small portion of the heart (*right*). These blocks are mottled under ultraviolet light (Group VIII) and of medium fluorescence. The top and bottom margins are imperforate; the left and right margins are perforated. There are no control numbers.

About five hundred panes escaped the cut-out trimoff. These panes are 8" in height, and show two additional types of fluorescent paper. Also, two different sizes of cutout appear — a small heart and a large heart.



small heart cut-out

A small heart cut-out appears in the upper left margin of an upper pane, and occurs on highly fluorescent paper (Group VIII). It is estimated that there are only about 75 small cut-outs in this position.



These blocks show the small heart cutout on highly fluorescent mottled paper (Group VIII), (*left*), and on slightly fluorescent paper (Group II), (*right*), in the lower right margins of lower panes.



large heart cut-out

Some large cut-outs were found in the lower margins of lower panes. The left block is on highly fluorescent paper, while the right block is on slightly fluorescent paper. The cut-out on the right block has an irregular, shield-like shape, perhaps caused when too many sheets were punched at one time. About 400 small and large cut-outs in the lower right position exist.

Trimming error



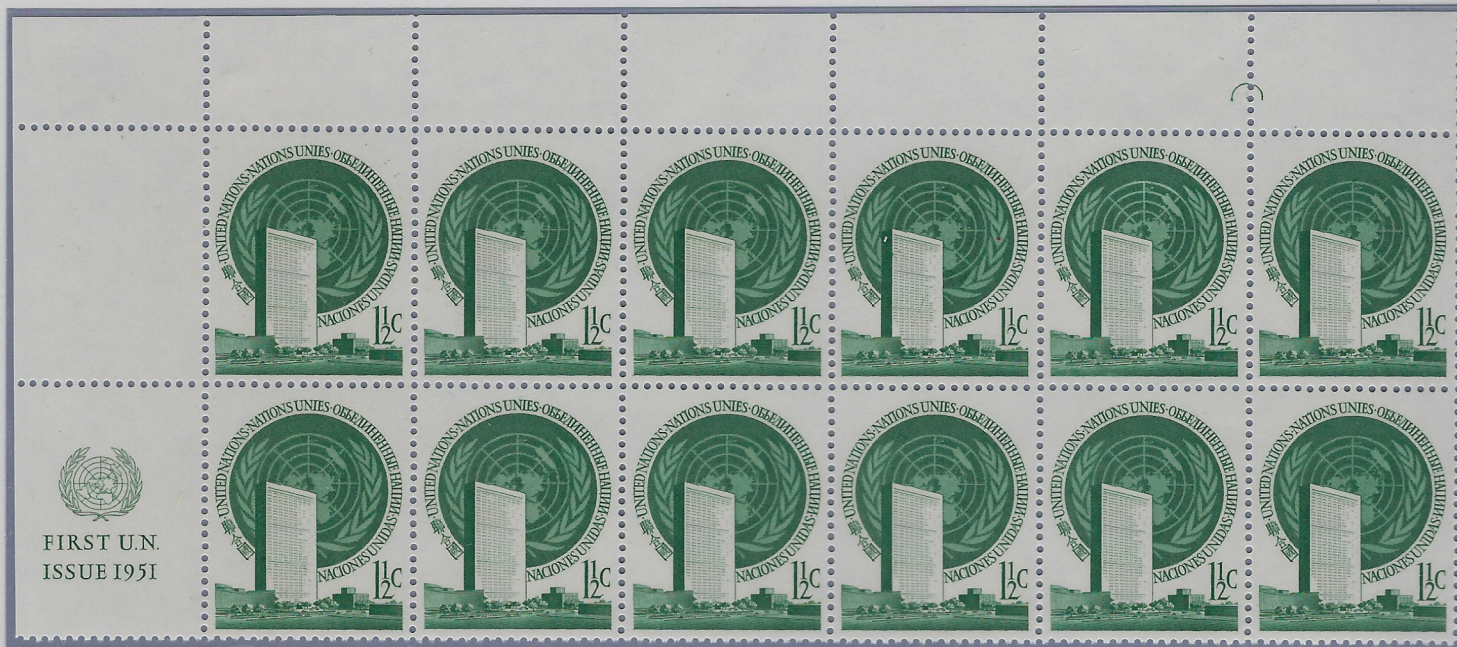
A pre-perforation and trimming foldover results in an added paper tab. This error is not listed in the Gaines catalog.



partial square cut-out

Fourth printing: Issued September, 1965; 1,000,000 issued. The paper is "hi-brite" (Group VII). The cut-out — a square — is trimmed to half a square and is found usually in the upper left margin of upper panes. Only a few lower panes show a partial cutout, as most cut-outs on lower panes were trimmed off. There are approximately 10,000 blocks with cut-outs. All margins are perforated. There are no control numbers.

Cut-out error



On a few upper panes of the fourth printing, there is no partial cut-out present. These are probably companion panes to the few lower panes which have a partial cutout in the lower right margin.

Printing errors

A few stamps from the fourth printing show a full offset impression of the stamp design on the gum side, probably resulting from a slip sheet not being inserted between freshly printed sheets during printing, and thus failing to absorb the wet ink from the previous sheet. Two panes of 50 stamps are known.



Normal

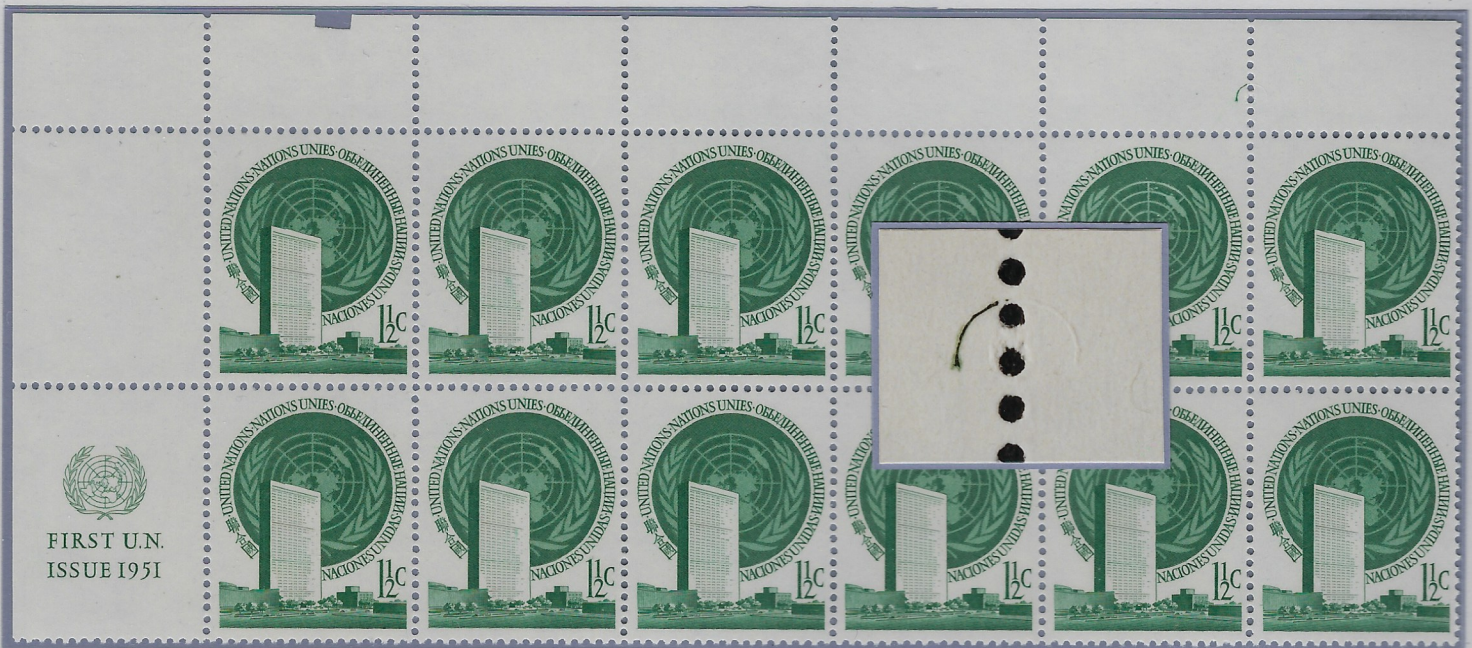


Offset



Four panes of stamps from the fourth printing are reported to have been printed on non-gummed paper, of which two are reported to be still intact. If one uses an ultraviolet light, these stamps can be differentiated from normal stamps that have had the gum removed by washing or soaking.

Perforation guide mark variety



On a few upper panes of the fourth printing, the perforation guide mark is only half printed, with the remaining half being embossed but with no ink — an albino impression.

triangle
cut-out



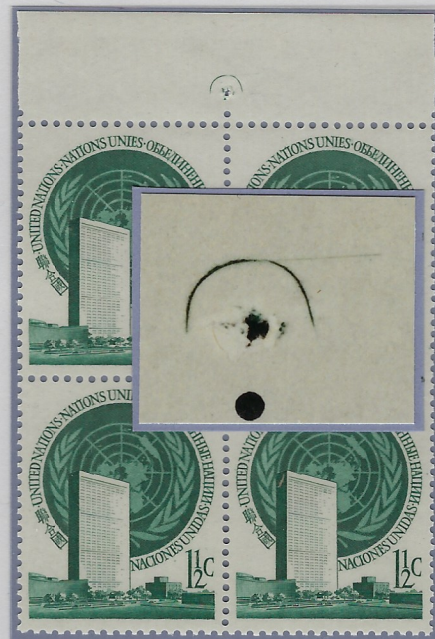
Fifth printing: Issued December, 1966; 450,000 issued. The paper is "hi-brite" (Group VII), with a glossy or waxy finish compared to the fourth printing. The cut-out — a large triangle — appears only in the lower right position of both upper and lower panes. This is the only cut-out found punched in the lower margin of an upper pane. Although the cut-out appears to be present in different sizes, the difference has been caused by the number of sheets being punched at one time. Note the impression of the cut-out die punch around the cutout on the block at the right. There are approximately 10,000 blocks with cut-outs. All margins are perforated. There are no control numbers.

Plate flaws – Plate 1

The first printing was made using the original plate (plate 1).

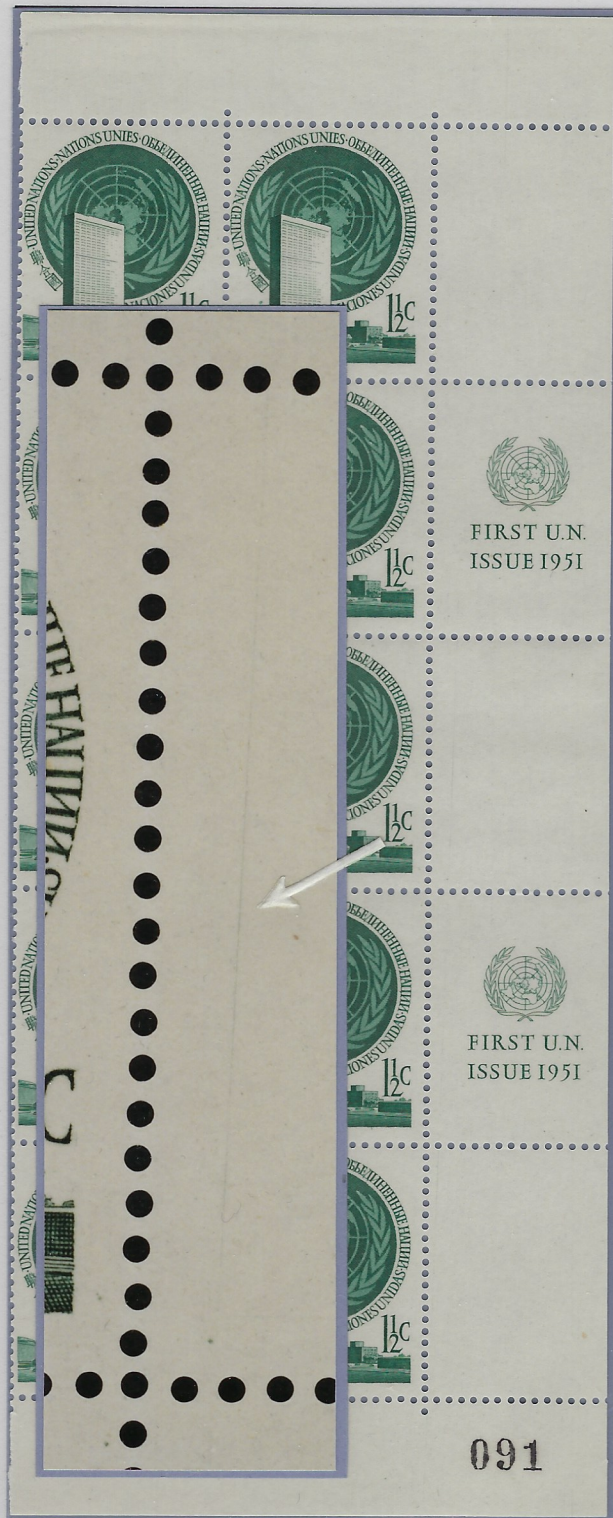


On the first printing, there is a sometimes a plate scratch in the upper right corner of an upper pane. The scratch must have occurred during the printing run, as it does not appear on all panes.



On the first printing, there is a plate scratch extending from the top of the perforation guide mark to the right. (Not listed in Gaines catalog).

In the right hand margin, faint scratches run through the pane between the stamps and the marginal inscriptions on the upper pane (left). The lines continue into the lower pane, passing through the stamps in the rightmost column (right).





On upper panes of plate 1, a small line extends downwards under stamp #40.



Stamp #10 shows an "apostrophe" effect after the "S" of "UNIES" on stamp #10. (There are also white tips on the top leaf of the right side of the wreath from improper inking.)

Plate flaws – Plate 2

The second to fifth printings were made using a second plate.



On upper and lower panes, three small dots appear around the top of the number "1" on stamp #12. This example is from an upper pane of the second printing.



On lower panes of plate 2, there is a large dot between the numeral "2" and the "c" on stamp #13. This example is from the third printing.



On lower panes of plate 2, there is a scratch through the "c" on stamp #21. This example is from the third printing.



On lower panes of plate 2, there are two small dots above the letter "S" of "NATIONS" on stamp #39. This example is from the second printing.

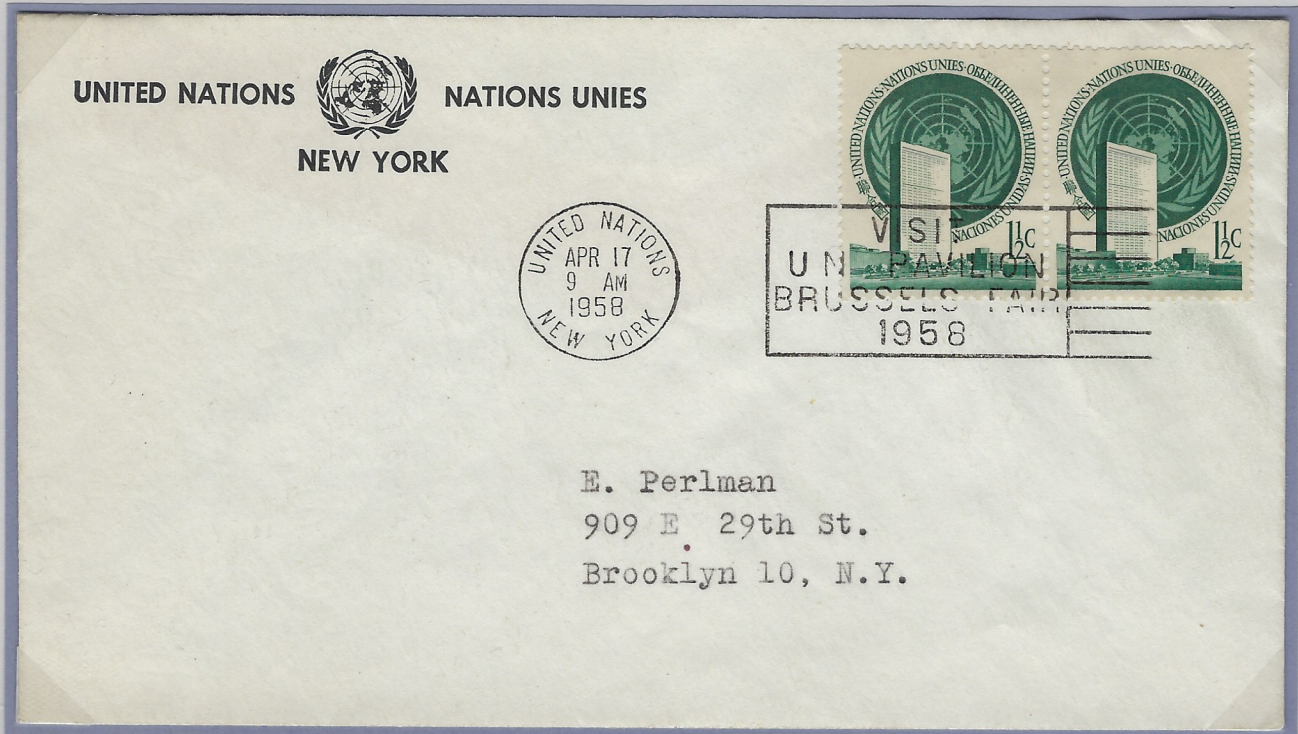


On the fourth and fifth printings, across from stamp #20, a slim line extends vertically upwards from the end of the "F" in "FIRST". This example is from the fourth printing. (Not listed in Gaines catalog.)

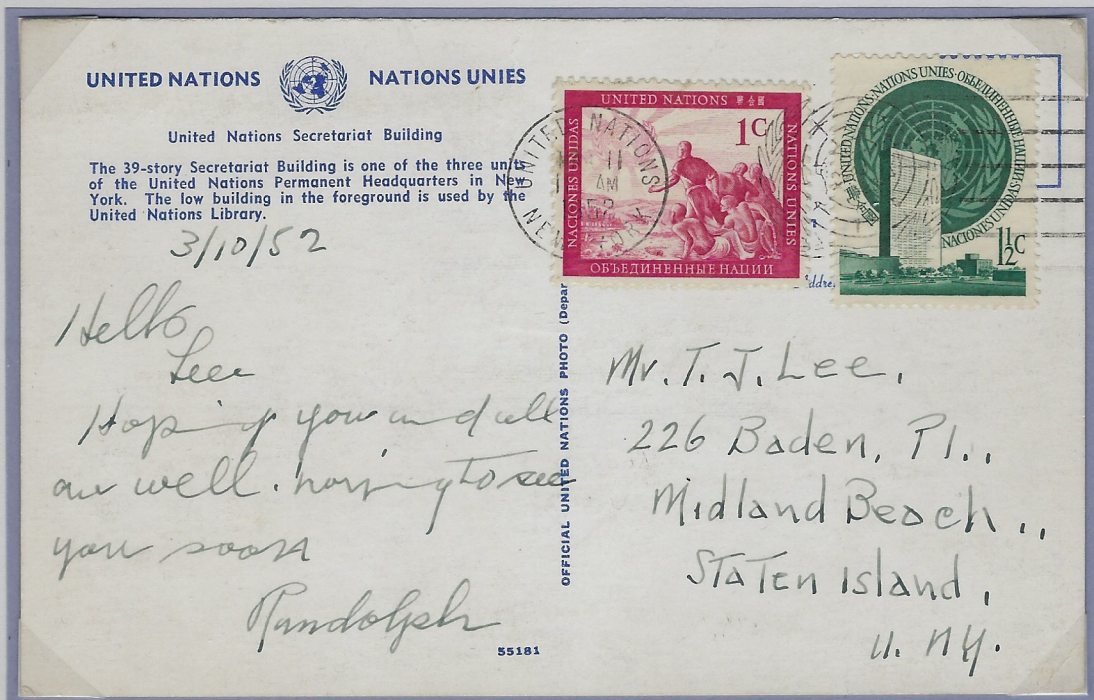


On the upper panes of all printings, the top of the circle of the U.N. emblem is light and Australia is much lighter on stamp #5. This example is from the second printing.

Postal usages



A pair of 1½¢ stamps paid the 3¢ first class letter (surface) rate in effect when the stamp was issued until July 31, 1958.

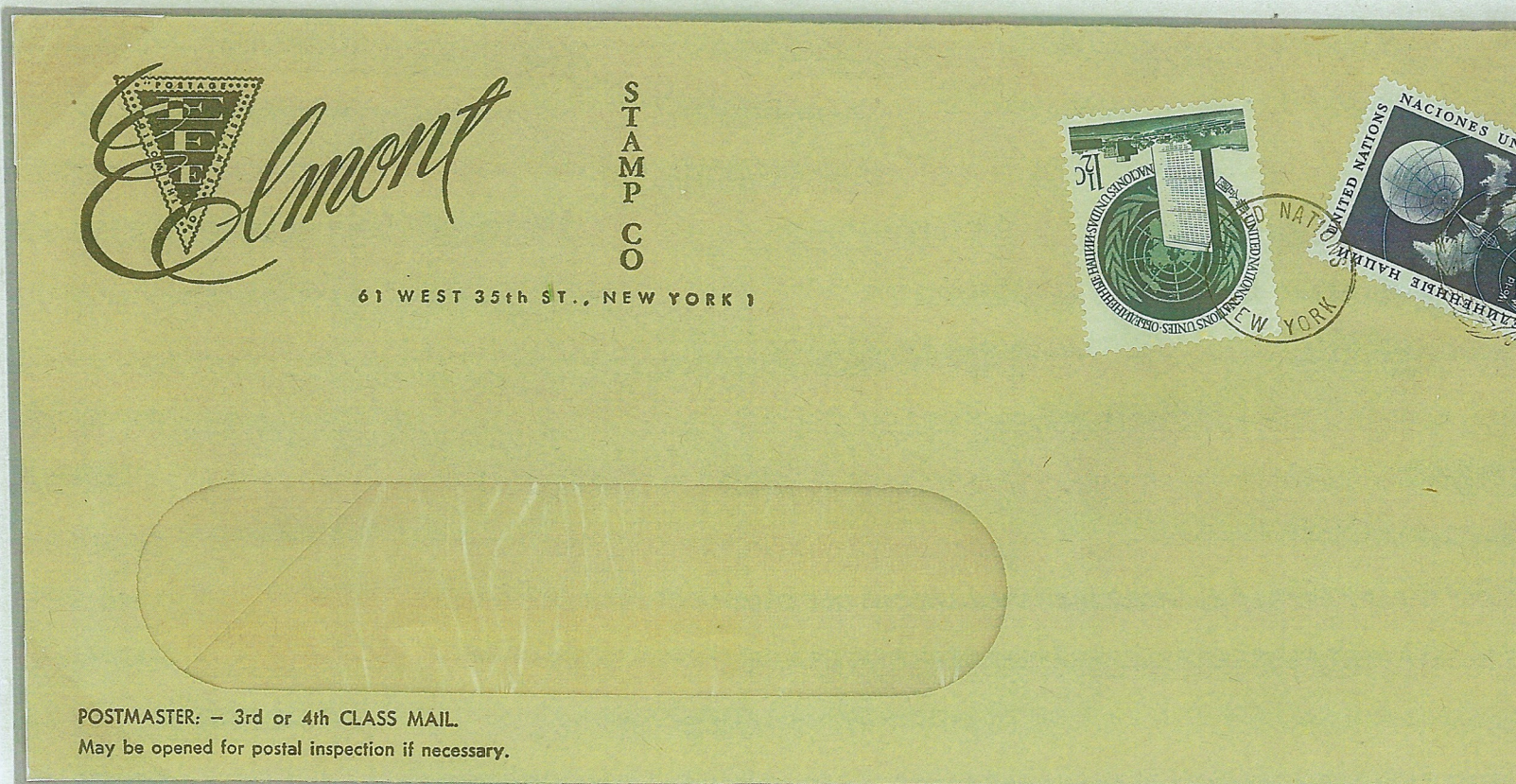


The 1½¢ stamp, along with a 1¢ stamp, overpaid by ½¢ the 2¢ domestic post card (surface) rate in effect from January 1, 1952 to July 31, 1958.

Definitive stamps (vertical) – Enschedé



A pair of 1½¢ stamps paid the third class rate of 3¢ for the first two ounces, the rate in effect from August 1, 1958 to January 6, 1963.



From August 1, 1958, until January 6, 1963, the third class rate was 3¢ for the first two ounces and 1½¢ for each additional ounce.



Mr. J. Vandeth
 Trigwell Street
 Donnybrook
 Western Australia

This pair of 1 1/2¢ stamps, used with 5¢ additional postage, pays the 8¢ international letter (surface) rate for one ounce or under to UPU countries, in effect from November 1, 1953 to July 31, 1958.



A. TERINS
 810 SECOND AVENUE
 NEW YORK, N.Y. 10017

PRIVATE BOX
 23 JUN 1965

Not
 July 2672

Returned from
 Box 2762
 Auckland
 2672

Not Box 2762

Mr. S.A. Wood
 Box 2762
 AUCKLAND C. I.
 NEW Zealand

CHECKED
 AUCKLAND
 28 JUN 1965

AIR MAIL

Postage of 25¢, including two 1 1/2¢ stamps, paid the international air mail letter rate (per 1/2¢ ounce) to Oceania, (which includes New Zealand).